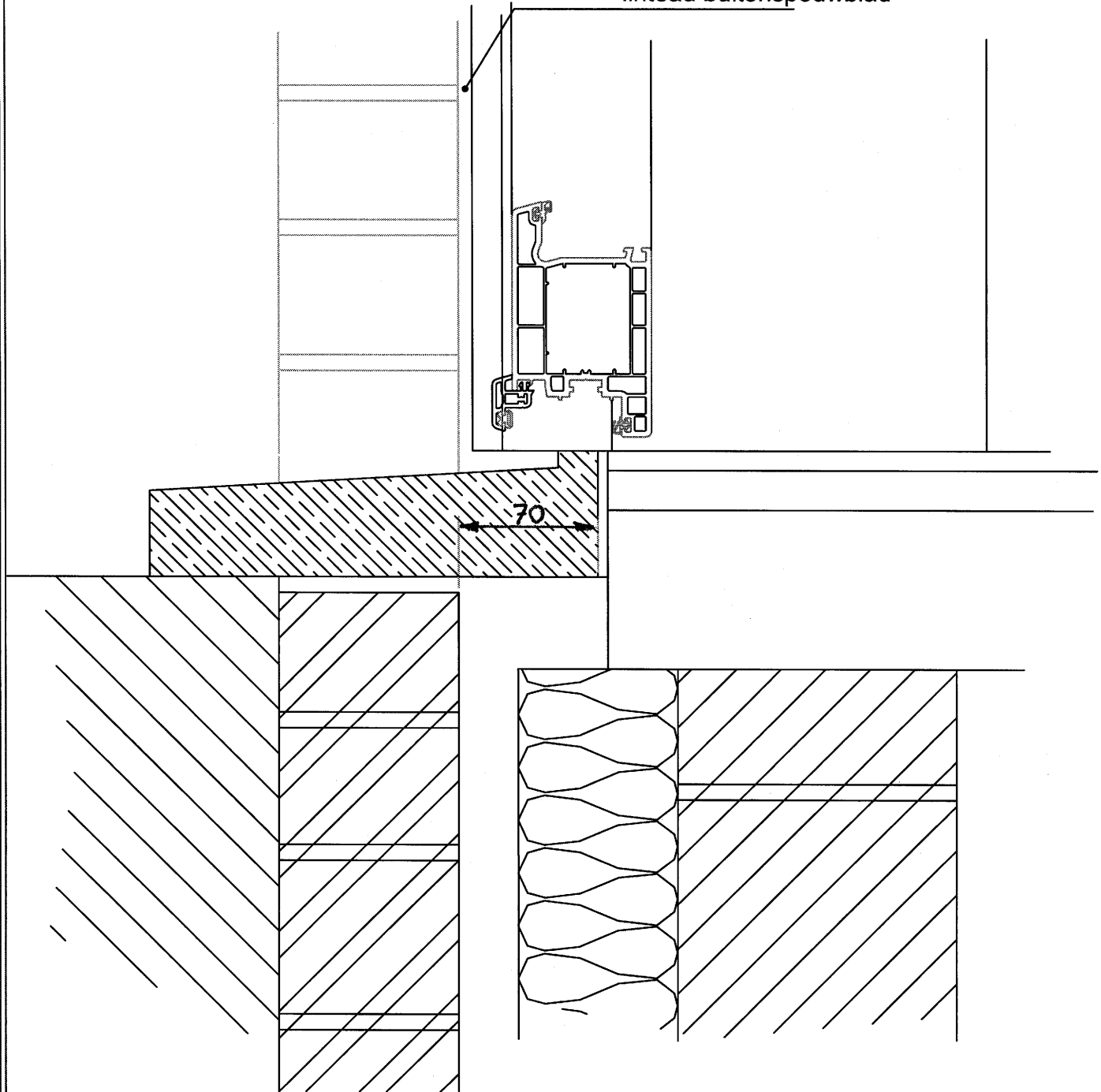
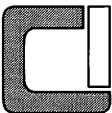


Dikte afhankelijk van dikte
linteau buitenspouwblad



CT70 Deur - binnendraaiend - zonder rolluik Arduin dorpel

| | | | | | | |
|--|-----------|-----------|-------------------------------|-----------------------|-----------------|-------------|
| Ref.nr.: | Aantal: 1 | | | | | |
| Getekend: | FD | Controle: | Goedgekeurd: | Datum:/..../.... | DATUM: 01/03/10 | Schaal: 1/3 |
|  Cope - Invent bvba Kwadestraat 19 B-8560 Gullegem Tel: 056/41.75.44 Fax: 056/42.22.09 www.cope-invent.be info@cope-invent.be | | | Project: Dorpelplannen | | | |
| | | | Omschrijving: | Versie: 1 | Tek.nr.: 1 | |